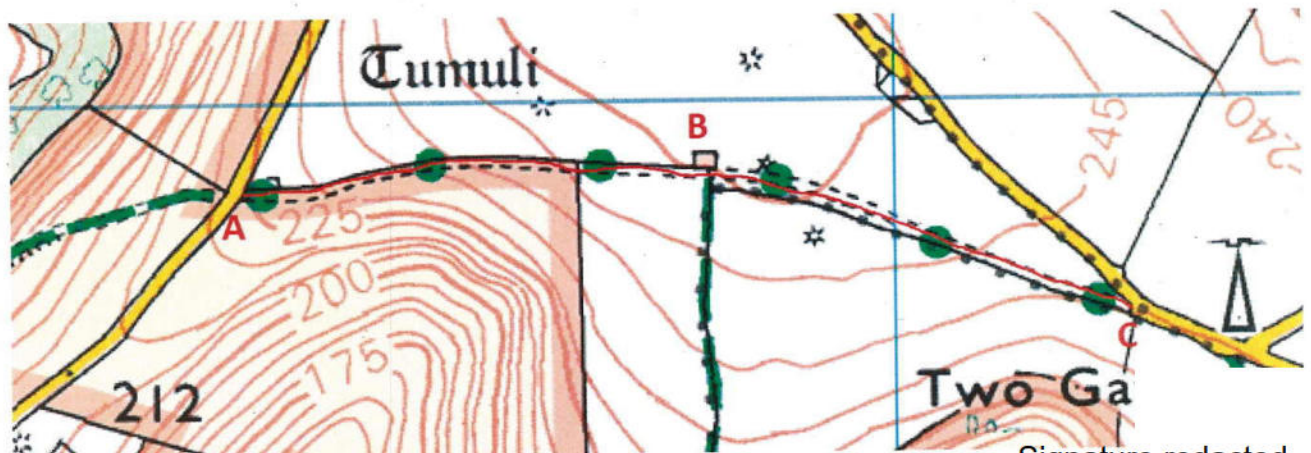


Wildlife and Countryside Act 1981

The Definitive Map and Statement of Public Rights of Way in Dorset

Map accompanying the DMMO application to:-

Add a Byway Open to All Traffic for a route in the parish of Askerswell from Point A (at approximately SY 5445 9393) on the public road opposite the eastern end of definitive bridleway W 4/3 eastwards to Point B (at approximately SY 5485 9394) at the northern end of definitive bridleway W4/4 on the parish boundary between Askerswell and Litton Cheney and continuing on to Point C (at approximately SY 5520 9383) on the public road at Two Gates to be shown as a Byway Open to All Traffic.



Signature redacted

"This copy has been made by or with the authority of Dorset Council pursuant to section 47 of the Copyright, Designs and Patents Act 1988 ("the Act"). Unless the Act provides a relevant exception to copyright, the copy must not be copied without the prior permission of the copyright owner.